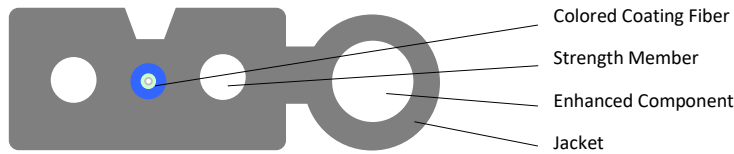


# Self Supporting Outdoor Drop cable



## 1. Fiber Parameters

No.	Items	Unit	Specification
			G.657A2 Corning Fiber
1	Mode Field Diameter	1310nm	$9\pm 0.4$
		1550nm	$10.1\pm 0.5$
2	Cladding Diameter	$\mu\text{m}$	$124.8\pm 0.7$
3	Cladding Non-Circularity	%	$\leq 0.7$
4	Core-Cladding Concentricity Error	$\mu\text{m}$	$\leq 0.5$
5	Coating Diameter	$\mu\text{m}$	$245\pm 5$
6	Coating Non-Circularity	%	$\leq 6.0$
7	Cladding-Coating Concentricity Error	$\mu\text{m}$	$\leq 12.0$
8	Cable Cutoff Wavelength	nm	$\lambda_{cc}\leq 1260$
9	Attenuation (max.)	1310nm	$\leq 0.35$
		1550nm	$\leq 0.21$
10	Macro-Bending Loss	1turn $\times$ 7.5mm radius @1550nm	$\leq 0.1$
		1turn $\times$ 7.5mm radius @1625nm	$\leq 0.2$

## 2. Cable Parameters

Items		Specifications
Fiber Count		1
Colored Coating Fiber	Dimension	$250\pm 15\mu\text{m}$
	Color	Blue
Strength Member	Dimension	0.45mm
	Material	Steel Wire
Enhanced Component	Dimension	1.2mm
	Material	Solid steel wire
Jacket	Dimension	$5.2\pm 0.1\text{mm}\times 2.0\pm 0.1\text{mm}$
	Material	LSZH UV-resistance
	Color	Black
	Standard	In accordance with IEC 60332-1

### 3. Mechanical and Environmental Characteristics

Items	Standard	Unit	Specifications
Tension (Long Term)	IEC 60794-1-21-E1	N	400
Tension (Short Term)	IEC 60794-1-21-E1	N	800
Crush (Long Term)	IEC 60794-1-21-E3	N/10cm	1000
Crush (Short Term)	IEC 60794-1-21-E3	N/10cm	2200
Min. Bend Radius (Dynamic)	IEC 60794-1-21-E11a	mm	20H
Min. Bend Radius (Static)	IEC 60794-1-21-E11b	mm	10H
Installation Temperature	IEC 60794-1-22-F1	°C	-10~+50
Operating Temperature	IEC 60794-1-22-F1	°C	-40~+60
Storage Temperature	IEC 60794-1-22-F1	°C	-40~+60
Fire properties – Flammability	IEC 60332-1		Pass
Water penetration	IEC 60794-1-2-F5		Pass

### 4. Cable Special Marks:

The cables is marked at intervals of 1 meter. Marking includes:

- a) Name of manufacturer
- b) Year of manufacture
- c) "FO Cable N fibers"
- d) Fiber type code – "SM G.657A2"
- e) Fiber manufacturer name
- f) Customer catalog number.
- g) Sequentially numbered length markers in meters.

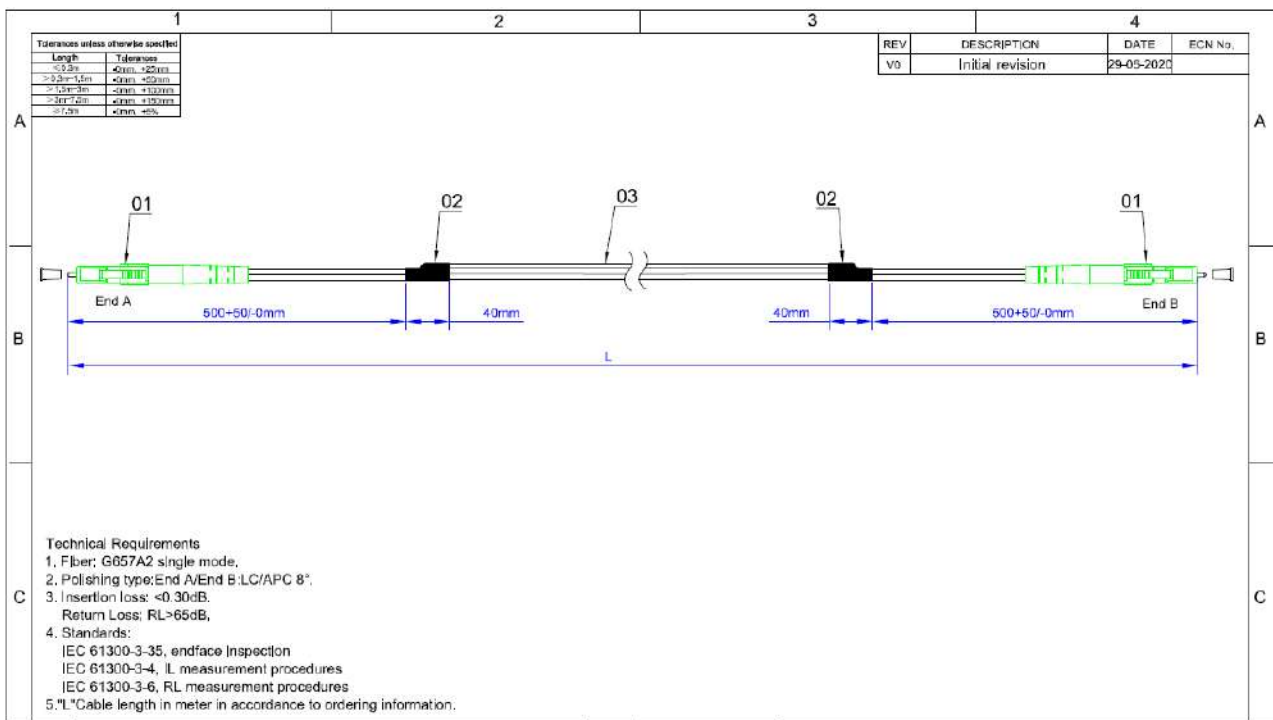
### 5. Ordering Information:

OCF0740 - **SELF SUPPORTING OUTDDOR DROP 1F G657A2 5.2X2MM BLACK**

## Pre-connected Self Supporting Outdoor Drop cable

### Parameters of optical fiber connector

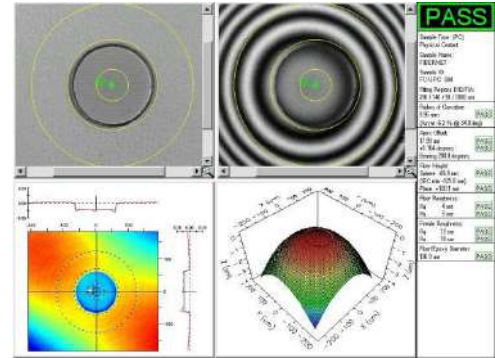
Items	Units	Specification
		Single Mode
Insertion loss	dB	≤0.3
Return loss	dB	UPC≥55db APC≥65db
Repeatability	dB	≤0.1
Vibratility	dB	≤0.2
Interconvertity	dB	≤0.2
Crush	Kg	≥300
Operating temperature	°C	-20 °C - +70 °C
Standards	GR-326-CORE, IEC 61754-7, TIA-604-10 (LC FOCIS 10), IEC 60793-1, IEC 61755-3, IEC 11801 (OS2, OM3 and OM4), IEC 60794-2 and IEC 60874	



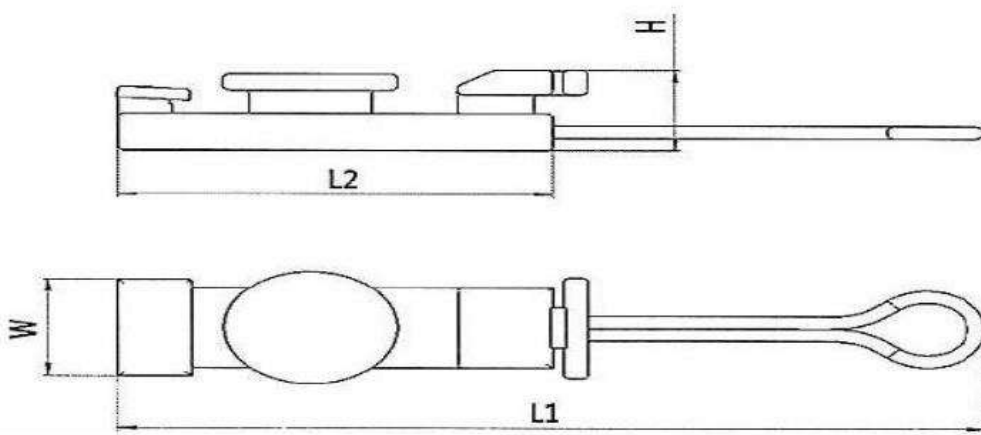
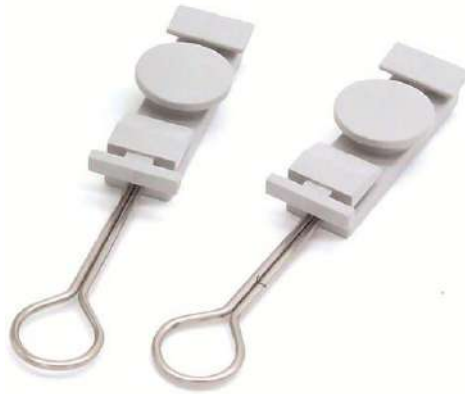
Ordering Information:

**FOD-** - - - - -

Cable		Fiber Type		Connector Type Side 1		Connector Type Side 2		Polish Type (2)		Cable Length [m]	
1	1 Fiber	5	50/125	S	SC	S	SC	U	UPC	XXX	XXX m
	2 fibers	6	62.5/125	L	LC	L	LC	A	APC		
		7	G657A2 BI								
		O	OM3								
		G	OM4								



## Self Supporting Outdoor Drop cable clamp



L1 = 140mm

L2 = 70mm

H = 20mm

W = 24mm

Materials : stainless steel & Nylon

*Ordering Information:*

FOD-CLMP