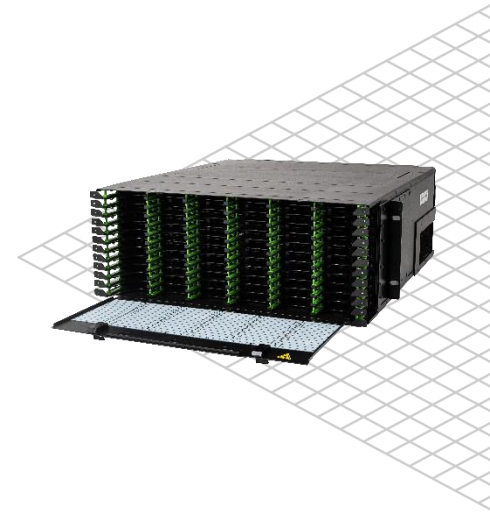


STAR400 4U High Density ODF

The STAR400 ODF 4U is a high-density, pre-terminated optical distribution frame of compact design, with 12 pull-out trays, having a maximum capacity of 576 fiber optic connections with easy access to make moves, adds and changes (MACs) faster and smoother.

Modular interconnections allow simple plug and play functionality. The tool-free innovative design significantly reduces installation time and cost. Base-8 fiber count configurations provide maximum utilization of fibers and form the optimal platform for migration to a wide range of bit rates up to 400G.



Data Centers



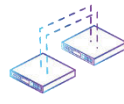
High Density Environments



Storage Area Networks (SAN)



Communications Rooms



Data Communication Networks

FEATURES

- Modular solution designed for use with Fibernet STAR400 modules
- High-density compact frame accommodates maximum connections in minimum space
- Front, rear and side access design and pull-out trays enable easy access to cables, ports and patch cords
- Efficient cable management and built-in labeling chart make MACs fast and smooth
- Easy tool-free installation process reduces time and cost
- Easy network differentiation with colored patch cord routing guides in each tray
- Integrated labeling system enables simple cable routing
- Optimized use of Uni-Boot patch cords for maximum density and reliability reduces cable volume by 50% compared to duplex patch cords
- Durable bend-insensitive cables offer greater flexibility in areas of constrained space, without risk of damage to the patch cords
- Equipped with strain relief clips and adjustable brackets for the secure mounting of all 24 trunk cable positions

STANDARDS

Compliant with the following standards:

- IEEE 802.3ab-2010 - ETL lab verified (up to 100G Ethernet) IEEE 802.3ba 40Gb/s and 100Gb/s
- IEEE 802.3ae 10 Gb/s
- IEEE P802.3bs 400 Gb/sec
- GR-449-CORE
- TIA-942
- IEC 60793-2-10:2019 applicable to A1-OM3 and A1-OM4
- ITU-T G657A2.
- UL94-V-0
- EIA-310
- RoSH

SPECIFICATIONS

PARAMETERS	VALUES		
Number of Trays	12		
Number of Modules	72		
Available Modules	LC-MTP®	4 x MTP® -MTP®	
Number of fibers	288 Duplex 576 fibers	192 MTP Ports 2304 fibers	
The calculation of total Fibers Hosting to MTP – MTP based on 12 Fibers per connector			
Dimensions	Height	Width	Depth
	1U	482.8 mm (19")	530 mm (20.8")
Color	Black RAL 9005		

SHIPPING INFORMATIONS

The STAR400 4U ODF is shipped in cardboard carton.

PARAMETER	LENGTH	WIDTH	HEIGHT
Dimensions (cardboard carton)	630 (24.8 ins.)	570 (22.4 ins.)	290 (11.4 ins.)
Packed weight	13.5 kg (29.7 lbs.)		

BUILD YOUR ORDER

FSTAR-4U ODF with 12 trays

Installation kit includes: 2 Cable Management Brackets, 1 spiral tube, 4 screws, 4 washers, and installation manual

Order the following separately:

- STAR400 Modules as required
- Cables and Patch Cords
- Optional: Brackets for 21" & 23" racks