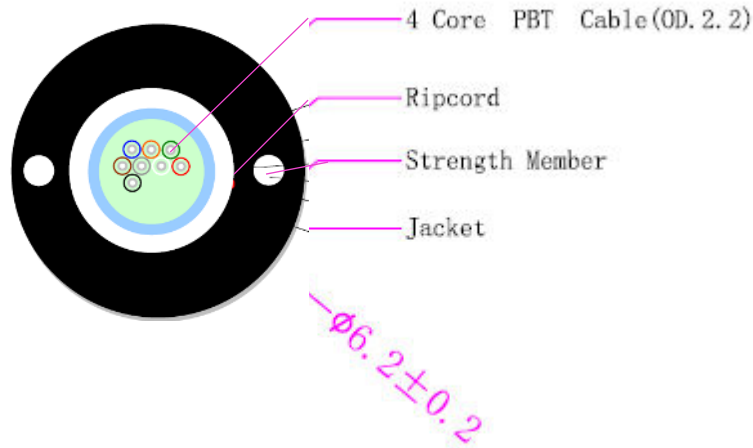


# Outdoor IP67 Pre-connected Cable – 8F



## Fiber Parameters

No.	Items		Unit	Specification
				G.657A2
1	Mode Field Diameter	1310nm	μm	8.6±0.4
		1550nm	μm	9.6±0.5
2	Cladding Diameter		μm	125.0±0.7
3	Cladding Non-Circularity		%	≤0.7
4	Core-Cladding Concentricity Error		μm	≤0.5
5	Coating Diameter		μm	245±5
6	Coating Non-Circularity		%	≤6.0
7	Cladding-Coating Concentricity Error		μm	<12.0
8	Cable Cutoff Wavelength		nm	$\lambda_{cc} \leq 1260$
9	Attenuation(max.)	1310nm	dB/km	≤0.4
		1550nm	dB/km	≤0.3
10	Macro-Bending Loss	1turn×7.5mm radius @1550nm	dB	≤0.5
		1turn×7.5mm radius @1625nm	dB	≤1.0

## Cable Parameters

Items		Specifications
Fiber Count		8
Colored Coating Fiber	Dimension	250µm±15µm
	Color	Blue, Orange, Green, Brown, Grey, Natural, Red, Black
Loose Tube	Dimension	2.2mm±0.10mm
	Material	PBT
	Color	Natural
Strength Member	Diameter	(3*0.3mm)*2
Outer Jacket	Dimension	6.2mm±0.3mm
	Material	PE
	Color	Black

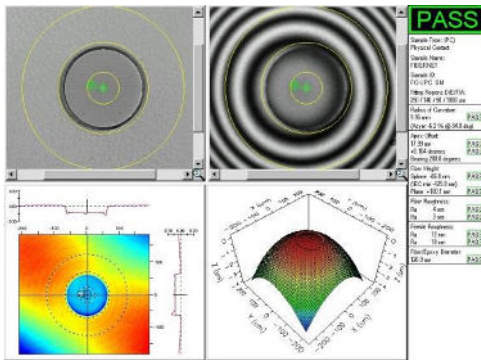
## Mechanical and Environmental Characteristics

Items	Unite	Specifications
Tension(Long Term )	N	450
Tension(Short Term)	N	900
Crush (Long Term)	N/10cm	300
Crush (Short Term)	N/10cm	1000
Min. Bend Radius (Dynamic)	mm	20D
Min. Bend Radius (Static)	mm	10D
Installation Temperature	°C	-20~+60
Operating Temperature	°C	-40~+70
Storage Temperature	°C	-40~+70

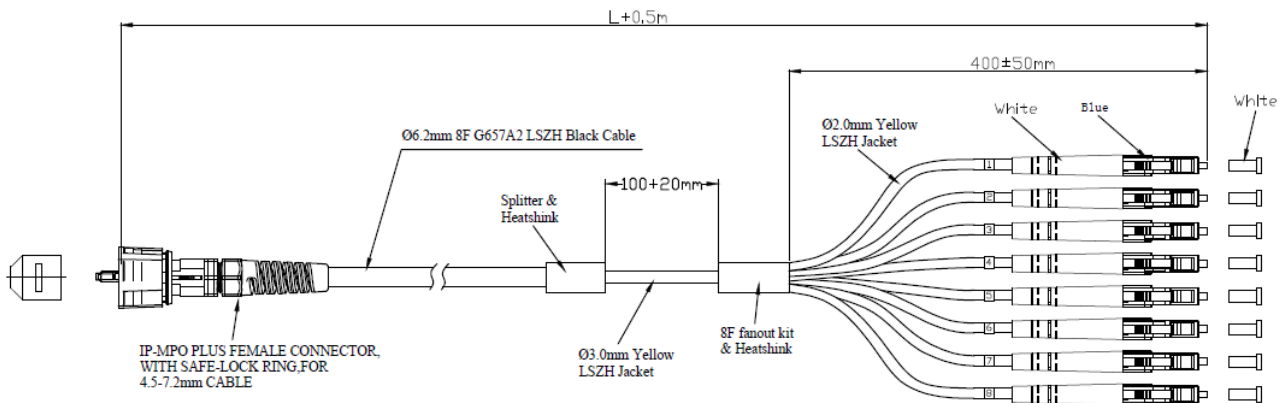
## Parameters of optical fiber connector

### IP 67 Connector

	Multi-mode Low Loss	Single-mode Low Loss
Insertion Loss	0.2 dB Typical (All fibers) 0.3 dB Max (single fiber)	0.1 dB Typical (All fibers) 0.3 dB Max (single fiber)
Return Loss	>-25 dB	>-55 dB Min. (UPC) >-65 dB (APC)
Durability	≤0.2 dB change 500 cycles (per EIA-455-21A)	≤0.2 dB change 500 cycles (per EIA-455-21A)
Operating Temperature	-40°C ~ +70°C	-40°C ~ +70°C



Items	Units	Specification
		Single Mode
Insertion loss	dB	≤0.3
Return loss	dB	UPC≥55db APC≥65db
Repeatability	dB	≤0.1
Vibratility	dB	≤0.2
Interconvertity	dB	≤0.2
Crush	Kg	≥300
Operating temperature	°C	-20 °C - +70 °C
Standards	GR-326-CORE, IEC 61754-7, TIA-604-10 (LC FOCIS 10), IEC 60793-1, IEC 61755-3, IEC 11801 (OS2, OM3 and OM4), IEC 60794-2 and IEC 60874	



### Cable Marking:

The cables is marked at intervals of 1 meter. Marking includes:

- Name of manufacturer
- Year of manufacture
- "FO Cable N fibers"
- Fiber type code – "SM G.657A2"
- Fiber manufacturer name
- Customer catalog number.
- Sequentially numbered length markers in meters.

### 6. Ordering Information:

**FIPC-87F9UU0400C050** - 8F OUTDOOR CABLE IP MPO - LC/UPC FAN-OUT 50CM L-40 METERS  
**FIPC-87F9UU0600C050** - 8F OUTDOOR CABLE IP MPO - LC/UPC FAN-OUT 50CM L-60 METERS  
**FIPC-87F9UU0800C050** - 8F OUTDOOR CABLE IP MPO - LC/UPC FAN-OUT 50CM L-80 METERS  
**FIPC-87F9UU1000C050** - 8F OUTDOOR CABLE IP MPO - LC/UPC FAN-OUT 50CM L-100 METERS