

Cross Connect Cabinets



Description:

These cabinets designed for FTTx applications.

The cabinets were built for outdoor use with special attention to fast installation and easy maintenance.

The cabinets are all premium factories assembled and ready for quick and reliable field deployment.

Features:

- > UV resistance
- > Door Stopper
- > Swing front panel
- > Cable management system
- > 2mm Aluminum 1050 prime quality.
- > Two-coat powder-coat Texture finish, first coat zinc rich primer then topcoat.
- > Lighting Eyes: 2No. M10 stainless lifting eyes top of cabinet.
- > Wall, Floor or pole Mounting
- > Minimal Sealing rated IP55
- > Special IP68 PG(Gland)
- > Environment Friendly: RoHS compliant
- > Color: RAL7035
- > Optional cable entry from upper and lower side of the cabinet.
- > Silk print numbers.
- > Lexan on the inside of the door.

Specifications and Dimensions:

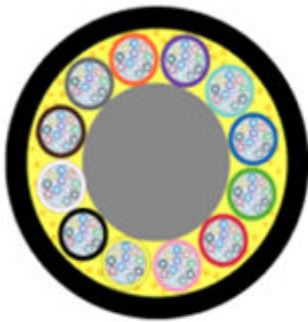
- > 700 x 500 x 300 mm (H x W x D)

Cable Stub

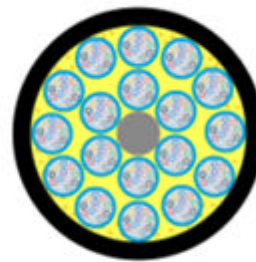
For fibers cabinet (full load) a single cable of fibers is being use with the following spec:

- > Stub length is 25 meters and can be customized.
- > Fillers used as needed to preserve cable geometry.

Fiberglass strength yarns reinforce the cable core and an outer jacket completes the cable structure.



288 Fibers – TYPE A



432 Fibers – TYPE B/C1

Design & Materials			
	<i>288 Fibers</i>	<i>432 Fibers</i>	<i>864 Fibers</i>
Fiber type	Fujikura / Corning SMF-28e+ / Draka – ESMF		
Fiber Connector	SC/UPC	SC/UPC	LC/UPC
Fiber Count	288	432	864
Micro units	24x12 filled with thixotropic gel	24x18 filled with thixotropic gel	2x(24x18) filled with thixotropic gel
Buffer Material	PBT		
Tube Diameter	2.5 mm		
Color Code	Per TIA/EIA 598-C		
Central Strength Member	FRP		
Cabling	SZ		
Strength Elements	E-Glass Yarns		
Water blocking	Dry Water blocking		
Outer Jacket Color	Black		
Outer Jacket Material	PE		
Outer Diameter	16 mm nom.	19.8 mm nom.	2x19.8 mm nom.
Weight	200 kg/km	205 kg/km	2x205 kg/km
Standards			
Applicable Standards	IEC 60794, ISO/IEC 11801, TIA/EIA-568		
Installation	Guidelines as per IEC 60794-1-1 Annex A		

Performance	
Tensile Strength – Short Term	2700 N max
Tensile Strength – Long Term	1620 N max
Impact Resistance	4.4 Nm
Impact Resistance	3 Cycles
Max. Crush Resistance	400 N/cm
Min. Bend Radius for Installation	20xD mm
Min. Bend Radius for Operation	10xD mm
Repeated Bending	25 Cycles
Max. Operating Temperature	+70°C
Min. Operating Temperature	-40°C
Max. Storage Temperature	+70°C
Min. Storage Temperature	-40°C
UV resistant	Yes
Water resistant	Yes

Stub Cable Termination (Pigtails)

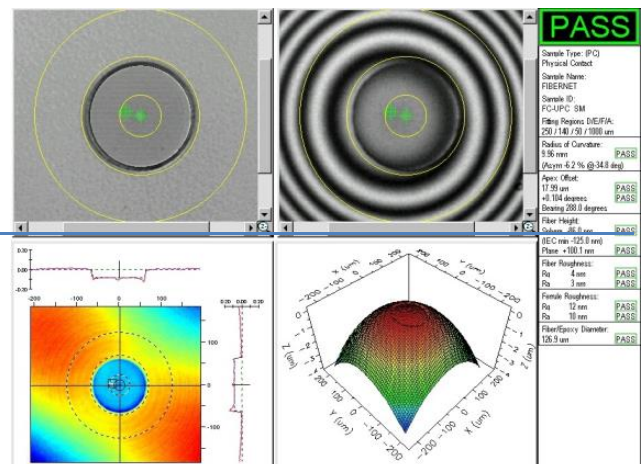
All fibers are factory pre terminated with connectors and guided with care for bending radius.

Features:

- > Produced and tested according to GR-326-CORE & TIA-568-C.3 Standards
- > Connectors Materials Flammability Rating: UL94-V0
- > Connectors comply with JIC-type and EIA/TIA 604 standards.
- > RoHS Compliant
- > Precise Zirconia ferrules.
- > Low insertion loss.
- > Low back reflection

Product Verification Tests

- > Insertion Loss.
- > Return loss.
- > Apex offset.
- > Radius of curvature.
- > Temperature range.



Technical specification:

Parameter	Performance
Insertion Loss	< 0.1 dB Typical < 0.3 dB Maximum
Return Loss (Back reflection)	- 55 dB UPC
Connector Repeatability (Loss Increase)	< 0.1 dB
Operation Environment	- 20°C to 80°C
Temperature Cycling (Loss Variation)	Insertion Loss < 0.1 dB Return Loss < 5 dB
Vibration (Loss Variation)	Insertion Loss < 0.1 dB Return Loss < 5 dB

Mounting device:



Pole mount



Doorstopper



Lift hooks

*Photos are for illustration only

Ordering Information:

FIBC-S-CABIN-A – Cross Connect Cabinet – 288 Fibers

FIBC-S-CABIN-B – Cross Connect Cabinet – 432 Fibers

FIBC-S-CABIN-C – Cross Connect Cabinet – 864 Fibers