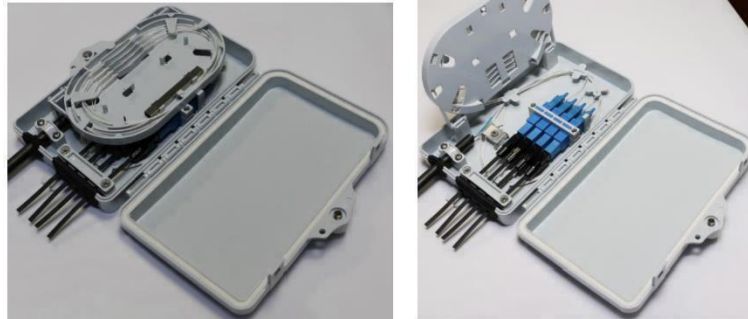


4 Fibers Distribution Box



Description

The equipment is used as a termination point for the feeder cable to connect with drop cable in FTTx communication network system. The fiber splicing, splitting, distribution can be done in this box, and meanwhile it provides solid protection and management for the FTTx network building.

Features

- ✓ Total enclosed structure, be in nice shape.
- ✓ Material: ABS, wet-proof, water-proof, dust-proof, anti-aging
- ✓ Clamping for feeder cable and drop cable, fiber splicing, fixation, storage, distribution...etc all in one.
- ✓ Cable, pigtails, patch cords are running through own path without disturbing each other, cassette type SC adapter installation, easy maintenance.
- ✓ Distribution panel can be flipped up, feeder cable can be placed in a cup-joint way, easy for maintenance and installation.

Specifications and Dimensions:

- 1). *Environmental Requirement*
 - Working temperature : -40°C~+85°C*
 - Relative humidity : ≤85% (+30°C)*
 - Atmospheric pressure : 70KPa~106Kpa*
- 2). *Main Technical Data*
 - Insertion loss : ≤0.2dB*
 - UPC return loss : ≥50dB*
 - APC return loss : ≥60dB*
 - Life of insertion and extraction : > 1000 times*

Rev. 1 – March 2018

3). Thunder-proof Technical Data

The grounding device is isolated with the cabinet, isolation resistance is no less than $2 \times 10^4 \text{ M}\Omega/500\text{V}$

(DC) ; $I_R \geq 2 \text{ 104M}\Omega/500\text{V}$

The withstand voltage between grounding device and cabinet is no less than 3000V

(DC) /min, no puncture, no flashover; $U \geq 3000\text{V}$

Configuration table:

Description	Size (Pic 1)	Max Capacity			Installation Size (Pic 2)
	A*B*C(mm)	SC	LC	PLC	D (mm)
Distribution Box	186*116*40	4	8	8 (LC)	195



Pic 1 Box Size



Pic 2 Installation Size

Ordering Information

Part Number	Description
FTTH-BOX-4F	4 Fibers Distribution Box